



Sunday 9<sup>th</sup> February to Sunday 16<sup>th</sup> February, 2014

**Takapuna Boating Club**  
Auckland, New Zealand

The Organising Authority is the Takapuna Boating Club, (TBC),  
in association with the NZ A-Class Catamaran Association and the IACA

---

## NOTICE OF RACE

---

### 1 RULES

- 1.1 The regatta will be governed by the rules as defined in *The Racing Rules of Sailing*.
- 1.2 The prescriptions and special regulations of Yachting New Zealand will not apply except the prescription relating to rule 68 – Damages
  1. *The findings of fact, and decisions of protest committees, shall be relevant only for the purposes of the ISAF Racing Rules of Sailing.*
  2. *All claims for damages arising from breaches of any of these rules are matters for other jurisdictions.*
  3. *A boat that retires from a race, or accepts a penalty, does not, by that action alone, admit liability.*
- 1.3 Under rule 86, *Changes to The Racing Rules* the following racing rules will be changed as follows:
  - Rules 35, A4 and A5 will be changed to state that boats failing to finish within 30 minutes after the first boat sails the course and finishes will be scored Did Not Finish,
  - Rule 40 will be changed to require personal floatation devices to be worn at all times while afloat,
  - Rule 44.1 will be changed so that the Two-Turns Penalty is replaced by the One-Turn Penalty,
  - Rule 60.1(a) will be changed to state that a competitor cannot protest another boat or competitor for breaches for some specific parts of the Sailing Instructions,

- Rules 62.2 and 66 will be changed to shorten the time limit for a request for redress and reopening of protest hearings on the last scheduled day of racing,
- Rules A4 and A5 will be changed to state that a boat starting later than 4 minutes after her starting signal will be scored Did Not Start.

The changes will appear in full in the Sailing Instructions. The Sailing Instructions may also change other racing rules.

1.4 The IACA Championship Rules will apply.

1.5 Under rule 87, *Changes to Class Rules* the following IACA Championship Rules will be changed as follows:

- Rule 3(a), 3(b), 3(c), 3(d) and 4(a) relating to eligibility, entries and IACA invitations shall not apply. The Championship is an Open Event and all sailors meeting the requirements set out in NOR 3 may enter.
- Rule 6(f) is changed so that only 1 discard shall apply when more than 5 races have been sailed.
- Appendix 2 shall not apply if fleet splitting is required. The method for splitting competitors into fleets, and the scoring of the qualifying and final series will be agreed by the IACA and the Organising Authority, and will be published with the Sailing Instructions.

1.6 For protests where only a Rule of Part 2, *When Boats Meet* or Rule 31, *Touching a Mark*, is alleged to have been broken an arbitration hearing will be offered prior to any formal hearing. Details of the arbitration process and penalties applied are included in Appendix C.

1.7 If there is a conflict between languages the English text will take precedence.

1.8 If there is a conflict between rules in the Notice of Race and the Sailing Instructions, the Sailing Instructions will take precedence.

## **2 IDENTIFICATION AND ADVERTISING**

2.1 Boats may be required to display on the outer side of each hull:

- a bow number
- an ISAF logo
- advertising chosen and supplied by the organizing authority.

The organising authority will supply the stickers and instructions for their use.

2.2 On the second and subsequent days racing, the first, second and third boats in series ranking at the beginning of the day may be required to display a yellow, blue or red sticker respectively on their sail. The organising authority will supply the stickers and instructions for their use.

2.3 Boats may be required to carry GPS tracking units and onboard cameras while afloat (or an equivalent dummy).

## **3 ELIGIBILITY**

3.1 The regatta is open to boats of the International A-Division Catamaran Association.

- 3.2 All competitors shall:
- a) comply with the requirements of ISAF Regulation 19,
  - b) be a current financial member of their National A-Class Association, which must in turn be a financial member of the IACA, or individual members of the IACA,
  - c) be a financial member of a club or other organisation affiliated with an ISAF member national authority.

3.3 Evidence of current eligibility and membership requirements shall be produced at Registration.

## 4 ENTRY

4.1 In accordance with IACA decisions, all competitors meeting the eligibility criteria of NOR 3, above, may enter this Championship as an Open Event.

### 4.2 *Entries Prior to 1<sup>st</sup> Oct, 2013;*

Eligible boats may enter through their National A-Class Association by completing the Official Entry Form and either emailing it or posting it to their National A-Class Association, together with the required entry fee by 1<sup>st</sup> October 2013.

Each National A-Class Association must pay in full to the Organising Authority for the number of boats entered through that National A-Class Association no later than 14<sup>th</sup> October, 2013.

After receiving all entries, but no later than 14<sup>th</sup> October, 2013, each National A-Class Association shall provide the Organising Authority with the completed Official Entry Forms for all their entered competitors.

### 4.3 *Entries After 1<sup>st</sup> Oct, 2013;*

Late entries may be accepted at the discretion of the Organising Authority, up until 18<sup>th</sup> December, 2013, by completing the Official Entry Form and either emailing it or posting it directly to the Organising Authority and depositing the required entry fee, including late entry fee, directly into the Organising Authority's bank account.

### 4.4 *2014 NZ National Championships / Pre-Worlds;*

Competitors may enter the NZ Nationals / Pre-Worlds on the same Official Entry Form and make one combined payment.

4.5 The Official Entry Form is posted on the Championship website.

## 5 CLASSIFICATION

There are no classification requirements in accordance with RRS 79.

## 6 FEES

6.1 The required entry fee for the World Championship is \$350.00 NZD.

6.2 Late entries, if accepted, shall be accompanied by an additional late entry fee of \$150.00 NZD – ie. Total entry fee of \$500.00 NZD.

- 6.3 The combined entry fee for the 2014 NZ Nationals / Pre-Worlds and the 2014 World Championships is \$500.00 NZD, when paid through the National A-Class Association's, by 1<sup>st</sup> October, 2013.
- 6.4 Late combined entries, if accepted, shall be accompanied by an additional late entry fee of \$200.00 NZD – ie. Total entry fee of \$700.00 NZD.
- 6.5 Entry fees paid to the Organising Authority shall be paid in \$NZD only and are non-refundable. All bank admin, exchange and transfer fees are the competitor's and/or the National A-Class Association's responsibility.
- 6.6 Entry fees paid to the Organising Authority shall be deposited directly into the Organising Authority's bank account;
- bank: ASB Bank Ltd  
branch: Central Auckland Commercial Banking  
account number: 12 - 3109 - 0044465 - 03  
swift/IBAN number: ASBBNZ2A
- reference the payment with "A-Cat Worlds" and your country / sail number.

## 7 FORMAT OF RACING

- a) If less than 80 boats are entered the championship will consist of a single series,
- b) If more than 80 boats are entered the organising authority, in conjunction with the IACA, will decide whether the championship will consist of a single series, or a qualifying and final series.

## 8 SCHEDULE

### 8.1 *NZ Nationals / Pre-Worlds:*

The Pre-Worlds shall consist of a series of up to 9 races – (refer schedule below). Please refer to separate NOR for this event.

Day	Date	Number of Races
Day 1	Wednesday 5 <sup>th</sup> Feb	Registration
Day 2	Thursday 6 <sup>th</sup> Feb	3 races
Day 3	Friday 7 <sup>th</sup> Feb	3 races
Day 4	Saturday 8 <sup>th</sup> Feb	3 races

### 8.2 *Measurement and Weighing:*

Sunday 9<sup>th</sup> February and Monday 10<sup>th</sup> February, 2014  
From 0900 to 1600, at the Takapuna Boating Club.

### 8.3 *Registration:*

Sunday 9<sup>th</sup> February and Monday 10<sup>th</sup> February, 2014  
From 0900 to 1600, at the Takapuna Boating Club.

### 8.4 *Briefing:*

Monday, 10<sup>th</sup> February, 2013  
At 1000 at the Takapuna Boating Club.

**8.5** *Dates of racing:*

The event shall consist of a series of up to 9 races – (refer schedule below).

<b>Day</b>	<b>Date</b>	<b>Time of First Warning Signal</b>	<b>Number of Races</b>
Day 1	Monday 10 <sup>th</sup> Feb	1300	Practice Race
Day 2	Tuesday 11 <sup>th</sup> Feb	1300	2
Day 3	Wednesday 12 <sup>th</sup> Feb	1300	2
Day 4	Thursday 13 <sup>th</sup> Feb	1300	2
Day 5	Friday 14 <sup>th</sup> Feb	-	Reserve Day
Day 6	Saturday 15 <sup>th</sup> Feb	1300	2
Day 7	Sunday 16 <sup>th</sup> Feb	1300	1

8.6 Races may be sailed back-to-back.

8.7 A maximum number of 3 races may be sailed on any one racing day, but only in compliance with IACA Championship Rules.

8.8 The Reserve Day may be used for racing if races have not been completed to schedule.

8.9 On Sunday 16<sup>th</sup> February, 2014 no warning signal will be made after 1500 hours.

**9 MEASUREMENT**

Each boat shall produce a valid measurement certificate at registration. Measurement and equipment inspection will be conducted in accordance with A-Class Catamaran Measurement Guidelines. The Equipment Inspection Regulations for the Championship will be published on the Championship website no later than 1<sup>st</sup> December, 2013.

In addition, spot measurement and safety checks may be conducted at any time throughout the regatta.

**10 SAILING INSTRUCTIONS**

The sailing instructions will be available at registration on Sunday 9<sup>th</sup> and Monday 10<sup>th</sup> February, 2014 at Takapuna Boating Club. Preliminary Sailing Instructions may be published on the Championship website.

**11 VENUE**

11.1 Appendix A shows the location of the regatta venue.

11.2 Appendix B shows the approximate location of the racing area.

**12 THE COURSES**

The IACA Championship course will be used.

---

**13 PENALTY SYSTEM**

- 13.1 Rule 44.1 is changed so that the Two-Turns Penalty is replaced by the One-Turn Penalty.
- 13.2 Decisions of the International Jury will be final as provided in rule 70.5, *Appeals and Requests to a National Authority*.

**14 SCORING**

- 14.1 5 races are required to be completed to constitute a championship.
- 14.2 (a) When fewer than 6 races have been completed, a boat's series score will be the total of her race scores.
- (b) When 6 or more races have been completed, a boat's series score will be the total of her race scores excluding her worst score.
- 14.3 In the event that fleet splitting occurs with a qualifying series and a final series being sailed, the scoring of the qualifying and final series will be agreed by the IACA and the Organising Authority, and will be published with the Sailing Instructions.

**15 SAFETY**

Competitors shall wear personal flotation devices at all times while afloat, except for brief periods while changing or adjusting clothing or personal equipment. Such devices shall be in good repair and comply with YNZ minimum standard, SR Appendix 4 (Yachting New Zealand Safety Regulations of Sailing). Dry suits or wet suits are not adequate personal buoyancy. This changes rule 40.

**16 SUPPORT BOATS**

- 16.1 All coach / support boats must register with the Organising Authority at registration and nominate the boat(s) they support.
- 16.2 Each coach / support boat shall display her national flag or country letters with a minimum height of 300mm clearly visible from both sides of the boat during the regatta.
- 16.3 Sufficient and correctly fitting personal flotation devices for each crewmember must be carried by all support boats at all times in accordance with the Maritime Rules of the New Zealand Maritime Transport Act.
- 16.4 Team leaders, coaches, and other support personnel shall comply with NOR 17.

**17 PROHIBITED ANCHORING AREA**

- 17.1 Boats associated with the championship and registered support boats shall comply with the New Zealand Government Regulation "Submarine Cables and Pipelines Protection Act 1996". This regulation prohibits anchoring in the area shaded in the No Anchoring area in Appendix B and defined on charts NZ532 and NZ5322.
- 17.2 Any boat or support craft breaking NOR 17.1 will be subject to a hearing resulting in a report to their National Authority and ISAF. As a consequence, a competitor associated with the coach of the support craft may be disqualified from the race closest to the time of the infringement.

## **18 LAUNCHING AND STORAGE**

- 18.1 Boats shall be kept on the beach front reserve at Takapuna Beach adjacent to the Takapuna Boating Club, unless instructed otherwise by the Organising Authority.
- 18.2 When unattended, all boats shall be securely tied down by at least 2 tie-downs. All competitors are responsible for supplying their own tie-down apparatus.
- 18.3 Access to boats in the boat park during certain hours, including the hours of darkness may be restricted.
- 18.4 Unless otherwise directed by the Organising Authority, all competing boats and equipment shall be launched and retrieved on the designated areas on the reserve at Takapuna Beach near the Takapuna Boating Club clubhouse.
- 18.5 No cars, caravans, trailers or containers will be permitted to be stored on the beach front reserve.

## **19 RADIO COMMUNICATION**

Except in an emergency, a boat shall neither make radio transmissions while racing nor receive radio communications not available to all boats. This restriction also applies to mobile telephones.

## **20 PRIZES**

20.1 Prizes will be awarded as follows:

- World Championship Perpetual Trophy awarded to the highest ranking sailor from the final standings,
- Highest placed Woman,
- Highest placed Junior sailor (under 25 years),
- Highest placed Master sailor (age 45 - 50 years),
- Highest placed Grand Master (age 50 - 55 years),
- Highest placed Great Grand Master (over 55 years),
- The top 10 finishers in the final standings.

Ages are defined as the competitor's age on the 1<sup>st</sup> January, 2014.

20.2 Other prizes may be awarded at the discretion of the Organising Authority or the IACA.

## **21 DISCLAIMER OF LIABILITY**

Competitors participate in the regatta entirely at their own risk. See rule 4, Decision to Race. The organizing authority will not accept any liability for material damage or personal injury or death sustained in conjunction with or prior to, during, or after the regatta.

## **22 RIGHTS TO USE NAME AND LIKENESS**

By participating in the championship, a competitor automatically grants to the Organising Authority and the sponsors of the event, the right in perpetuity, to make, use and show, from time to time and at their discretion, any motion pictures, still pictures and live, taped or film television and other reproductions of him/her during

the period of the competition for the said championship in which the competitor participates and in all material related to the said championship without compensation.

## 23 INSURANCE

Each participating boat shall be insured with valid third-party liability insurance with a minimum cover, including coverage when racing off Takapuna Beach of \$1,000,000 NZD per incident or the equivalent. Proof of this insurance, including racing cover, shall be available at all times.

## 24 FURTHER INFORMATION

For further information please contact;

Organising Authority:

Evelyn Johnson  
Sailing Events Takapuna  
PO Box 33-1601  
Takapuna  
Auckland 0740

email: [evelyn@sailingeventstakapuna.com](mailto:evelyn@sailingeventstakapuna.com)

web-site: <http://www.sailingeventstakapuna.com>

NZ A-Class Association:

Steve Ashley  
13 Colonial Road  
Birkenhead  
Auckland

mobile: +64 (0)27 4777 969

email: [steve@riggingshop.co.nz](mailto:steve@riggingshop.co.nz)

Takapuna Boating Club  
The Strand  
Takapuna  
Auckland

Takapuna Boating Club  
PO Box 33-062  
Takapuna  
Auckland 0740

Phone: +64 9 489 6941

Fax: +64 9 486 0747

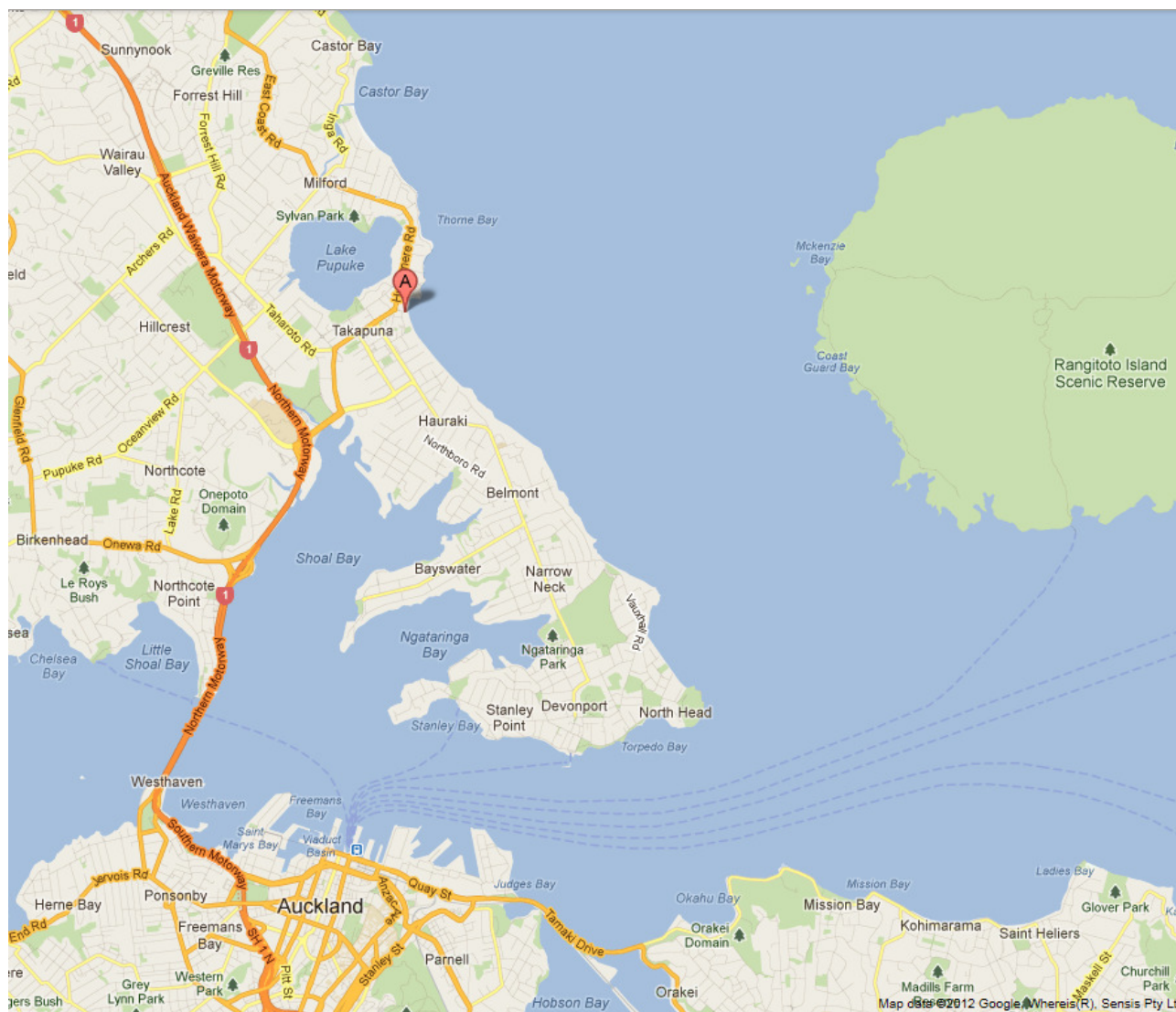
email: [info@takapunaboating.org.nz](mailto:info@takapunaboating.org.nz)

web-site: <http://www.takapunaboating.org.nz>



## APPENDIX A

### LOCATION OF TAKAPUNA BOATING CLUB

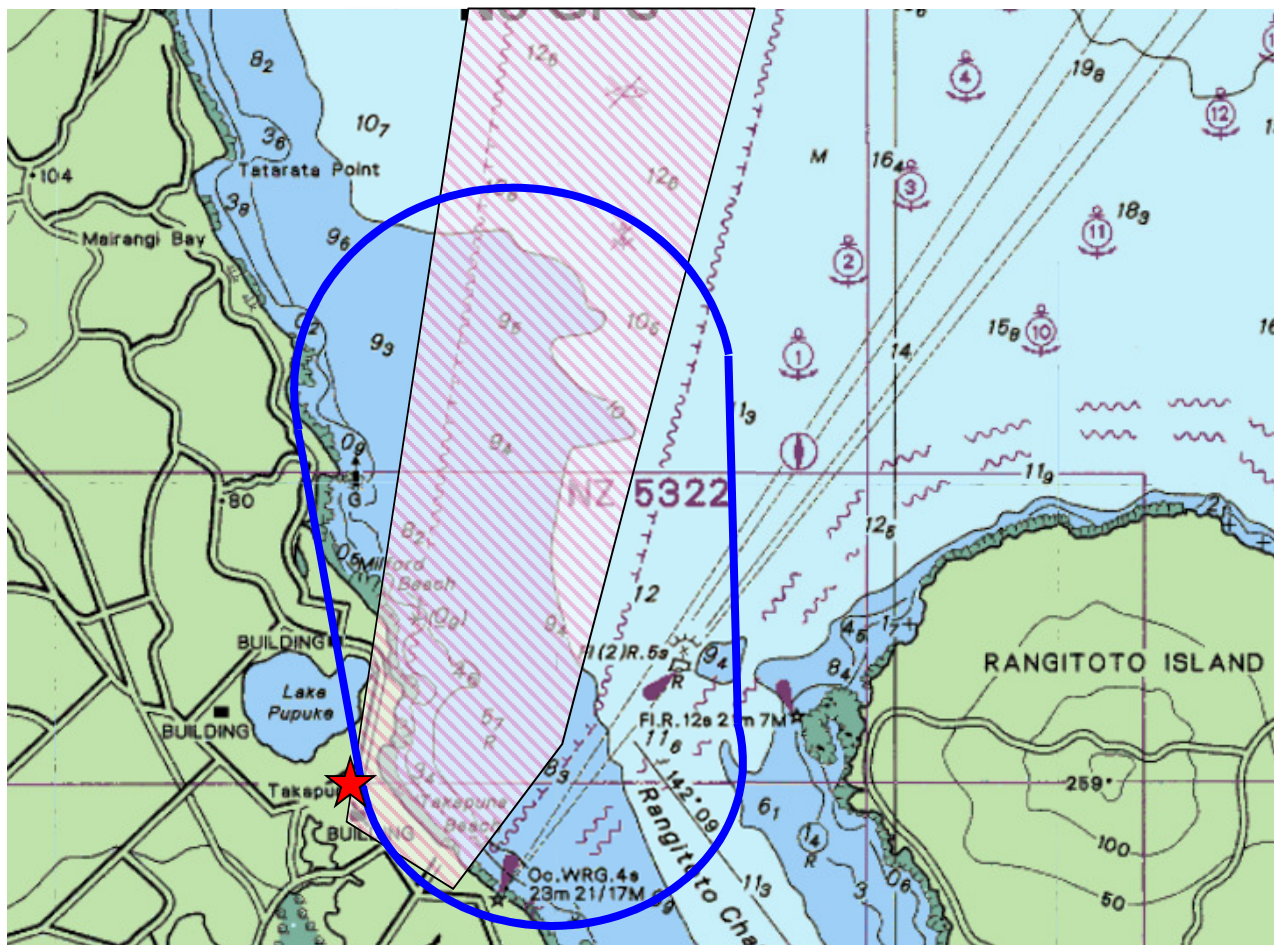


#### **A** Takapuna Boating Club location

39 The Strand  
Takapuna  
Auckland, NZ

## APPENDIX B

### APPROXIMATE LOCATION OF THE RACING AREA



★ Takapuna Boating Club location

○ Approximate course area

▨ Prohibited anchoring area

---

## APPENDIX C

### ARBITRATION PROCESS

#### REGULATIONS OF YACHTING NEW ZEALAND

##### Extract of Regulation 4.5.5

## Arbitration

*This regulation applies only if the sailing instructions so state.*

- i Rule 44.1, *Taking a Penalty*, is changed to permit a boat that has broken a rule of Part 2, *When Boats Meet*, or rule 31, *Touching a Mark*, to take a penalty after racing but prior to any protest hearing. Her penalty shall be a scoring penalty as calculated in rule 44.3 (c), *Scoring Penalty*, equal to 40% of the number of entries in her fleet or 50% of the difference between her finishing position and the number of entries in her fleet, whichever is less.
- ii For a protest between two boats; alleging only an infringement of a rule of Part 2, *When Boats Meet* or rule 31, *Touching a Mark*, an Arbitration hearing will be offered subsequent to the protest being lodged and prior to any formal hearing.
- iii The Arbitrator will decide the time and place of the hearing and such advice may be given verbally.
- iv One designated representative of each boat, who shall have been on board the boat when the incident occurred, may appear together before an Arbitrator appointed by the Protest Committee. Note: No witnesses shall be allowed.
- v The Arbitrator will ask each party if they agree to arbitration. The Arbitration will only proceed if both parties agree.
- vi The Arbitrator will check the protest for validity. If the Arbitrator decides the protest does not comply with the protest validity requirements of rule 61, Protest Requirements, the protestor will be invited to withdraw the protest. If the protestor does not withdraw the protest, it will be submitted for a protest hearing.
- vii If the protest is valid the Arbitrator will have each party describe the incident, limiting each party to approximately two minutes. The Arbitrator will then express one of the following opinions:
  1. No rule was broken. The protestor can then elect to withdraw the protest and if so, will sign to this effect on the protest form. The protest is then withdrawn and shall not be reopened or appealed. If the protestor does not withdraw the protest, it will be submitted for a protest hearing.
  2. A rule was broken by one or both boats. The representative of the offending boat can elect to either accept a 40% scoring penalty or proceed with a protest hearing. If the penalty is accepted, and the protestor also withdraws the protest by signing to this effect on the protest form, the matter is closed and cannot be submitted to a hearing, re-opened, appealed or submitted for redress.
  3. The protest should go to a protest hearing.

- viii When protests are submitted to a protest committee, the Arbitrator may not be a member of the protest panel.
- ix When the protestee has agreed to accept a 40% scoring penalty during arbitration, but the protestor has not accepted an invitation to withdraw the protest, then the boat that was prepared to accept the penalty is found to have broken a rule at the protest hearing she may only be penalized 40% by the protest committee, unless she failed to retire when rule 44.1(b), *Taking a Penalty*, required her to do so.
- x An Arbitration hearing shall not be re-opened.
- xi The Arbitrator is neither the Race Committee nor the Protest Committee; therefore, the outcome of the Arbitration hearing cannot be grounds for redress by any of the parties or be appealed.
- xii In all cases, the penalty taken must be appropriate for the infringement. A boat taking a penalty other than retirement cannot have caused injury or serious damage, or have gained a significant advantage.